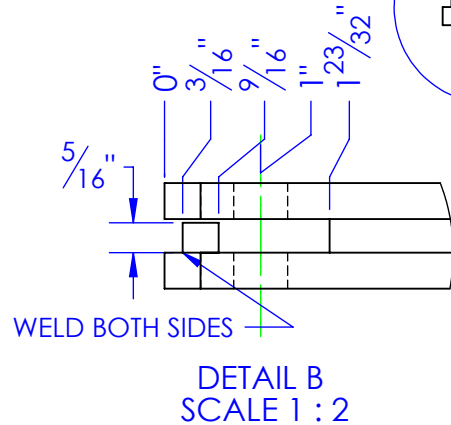
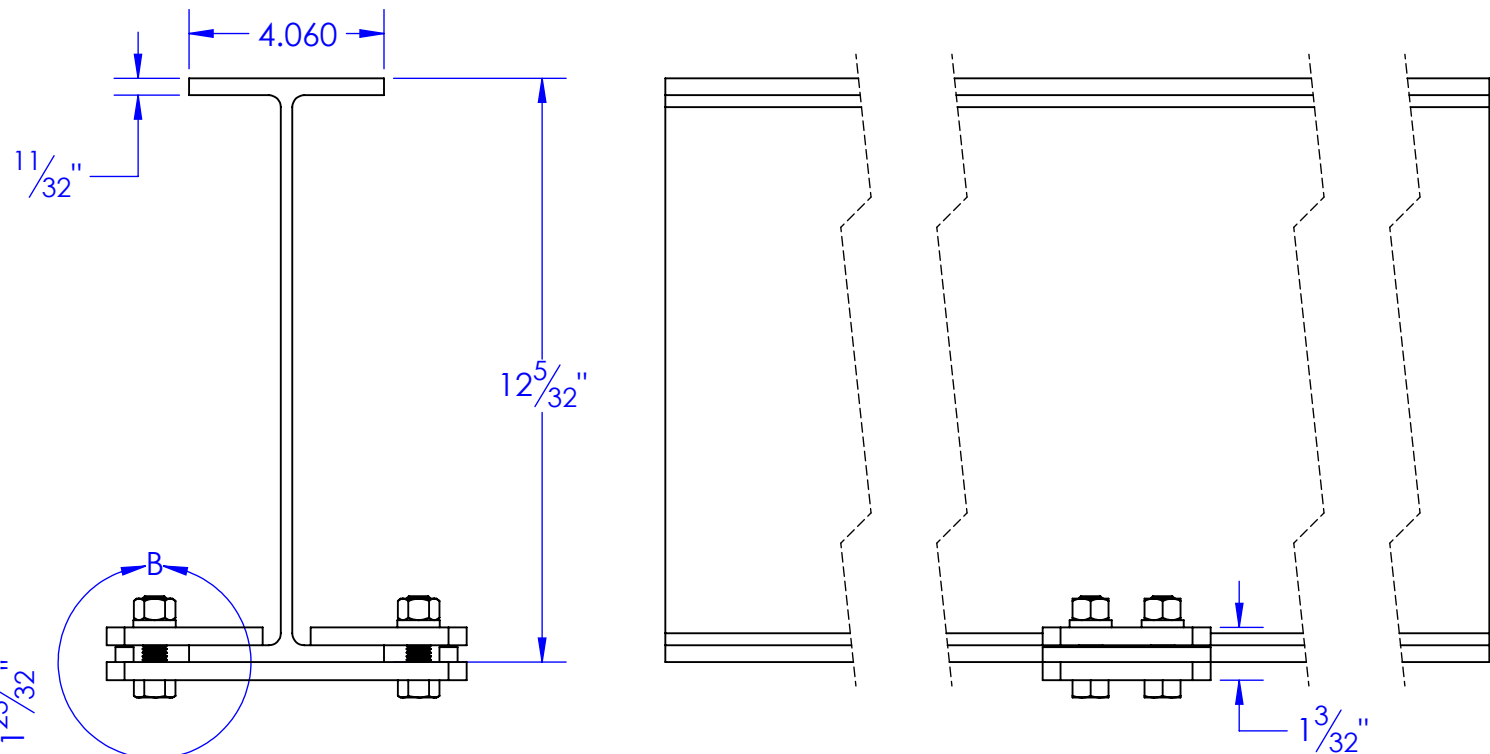
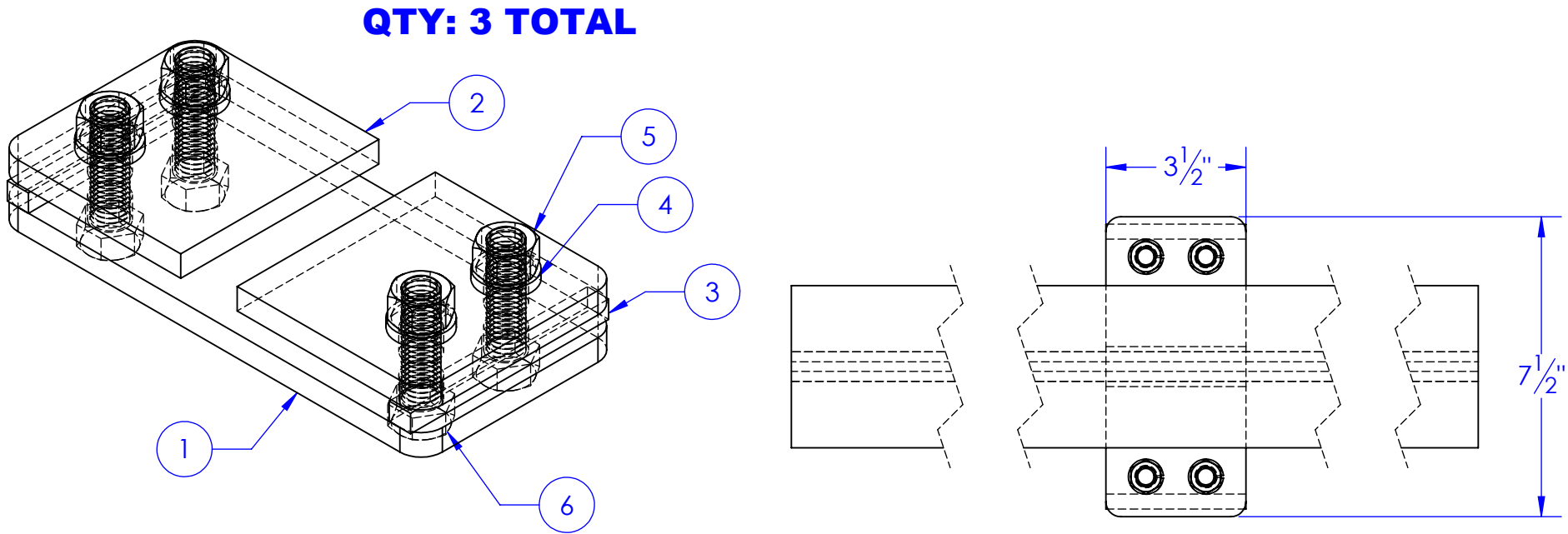
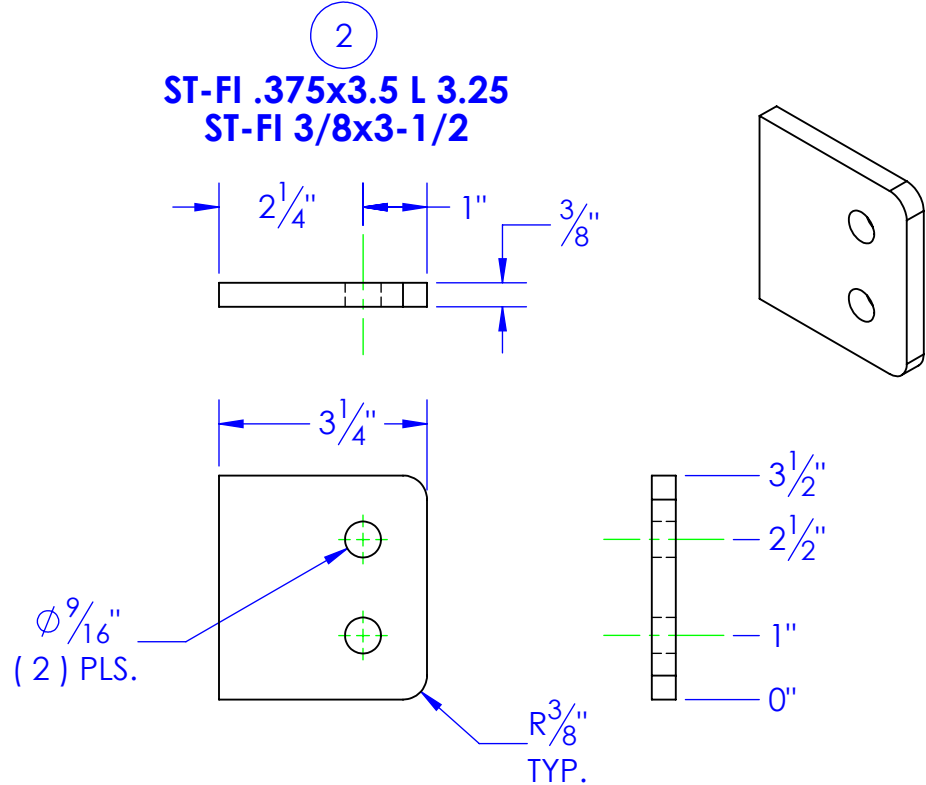
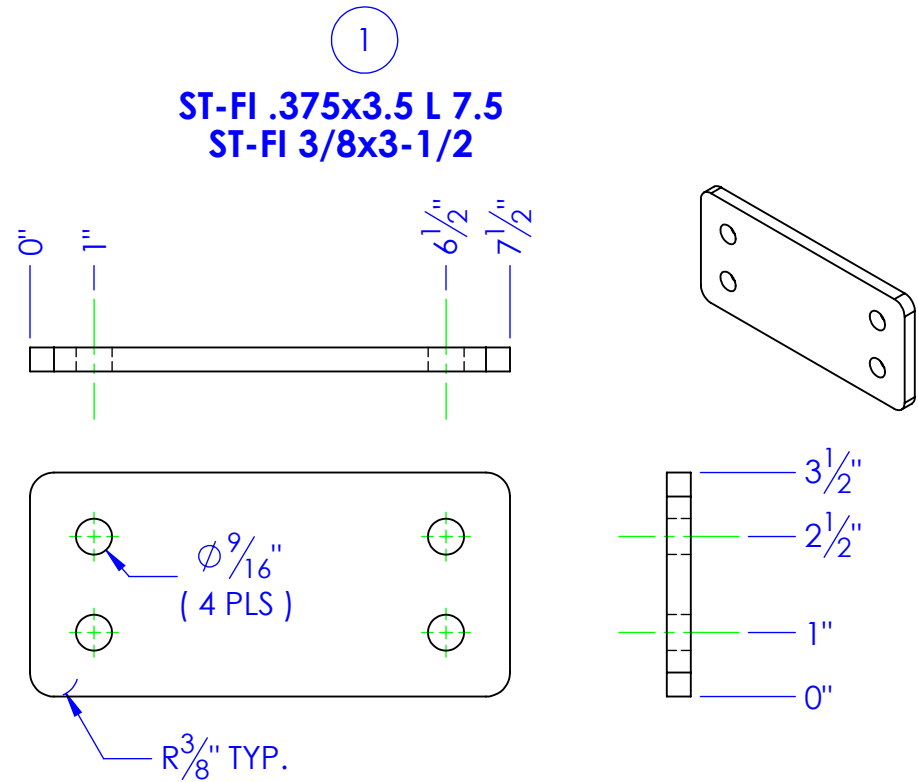


ITEM NO.	PART NUMBER	DESCRIPTION	QTY.
1	ST-FI .375x3.5 L 7.5	LENGTH : 7-1/2"	1
2	ST-FI .375x3.5 L 3.25	LENGTH : 7-1/2"	2
3	ST-FI .375x3.5 L .3125	LENGTH : 7-1/2"	2
4	BO-1/2 LW	1/2" LOCK WASHER	4
5	BO-1/2 HN	1/2" HEX NUT	4
6	BO-1/2x1-3/4	BOLT 1/2 x 1-3/4	4



PROPRIETARY AND CONFIDENTIAL

THE INFORMATION CONTAINED IN THIS DRAWING IS THE SOLE PROPERTY OF <INSERT COMPANY NAME HERE>. ANY REPRODUCTION IN PART OR AS A WHOLE WITHOUT THE WRITTEN PERMISSION OF <INSERT COMPANY NAME HERE> IS PROHIBITED.

UNLESS OTHERWISE SPECIFIED:

DIMENSIONS ARE IN INCHES

TOLERANCES:

FRACTIONAL  $\pm 1/16$

ANGULAR: MACH  $\pm 1$  BEND  $\pm$

TWO PLACE DECIMAL  $\pm 0.010$

THREE PLACE DECIMAL  $\pm 0.005$

MATERIAL

DO NOT SCALE DRAWING

DRAWN	NAME	DATE	P.O. BOX 248, SABETHA KS. 66534 (785) 284-3674 FAX (785) 284-3931		
PART #	HEATH	7/13/2012	<b>TRIPLE C</b> INC.		
ASM #	FA-CRANE-I-BEAM STOP				
COMMENTS:			SIZE	DWG. NO.	REV
CRANE I-BEAM LIFT STOP			<b>B</b>	<b>95-1403</b>	<b>A</b>
			SCALE: 1:4	WEIGHT: ?	SHEET 1 OF 1